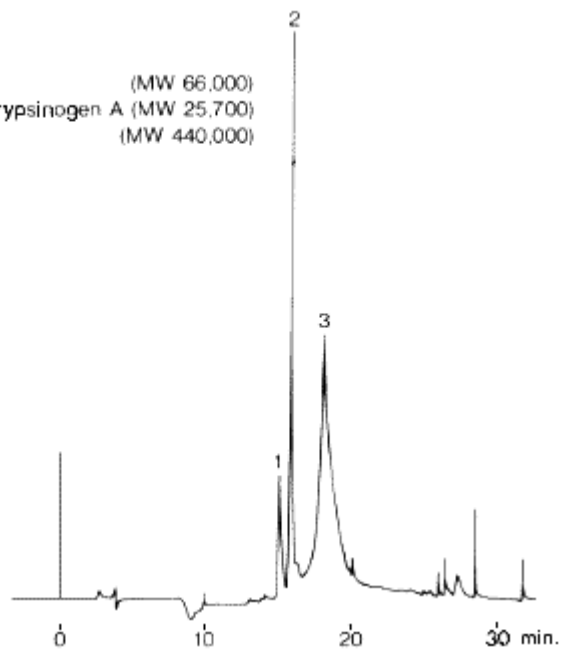


Sample:

- 1. BSA (MW 66,000)
- 2. Chymotrypsinogen A (MW 25,700)
- 3. Ferritin (MW 440,000)



Column : Shodex Asahipak C4P-50 4D (4.6mmID\*150mm)  
Eluent : (A); 0.1% TFA aq./CH<sub>3</sub>CN=90/10  
(B); 0.1% TFA aq./CH<sub>3</sub>CN=5/95  
Linear gradient: 0 to 30min, (A) to (B)  
Flow rate : 0.6mL/min  
Detector : UV(280nm)  
Column temp. : 30°C